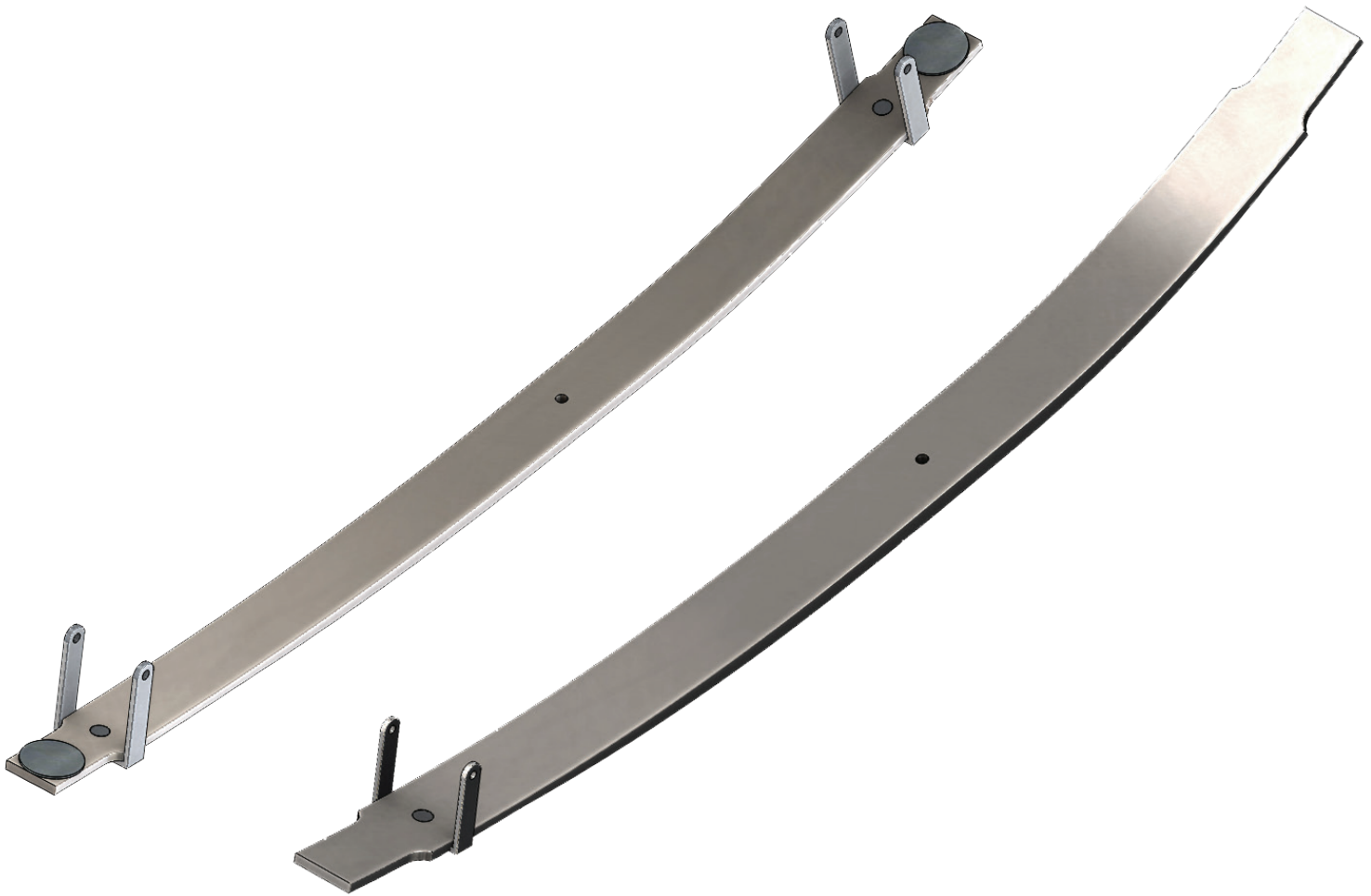


Taper Extra Leaf Series



For more information visit www.theuniversalgroup.com or call 1.800.225.1845

Universal Group[®]



The Universal Group, LLC
1025 Thomas Busch Memorial Highway
Pennsauken, New Jersey 08110
1.800.225.1845
856.488.1800
Fax 1.800.360.9636



Taper Extra Leaf Series



Universal Group	Dayton Parts	Weight	Springs								
22-1175 XL	22-1175-XL	24.99	22-1171	22-1173	22-1175	22-1229	22-1231	22-1233			
22-402-3LT	22-402-XL	13.44	22-400	22-402	22-408	22-410	22-460	22-462	22-464		
22-482 XL	TXL-220	31.80	22-476	22-478	22-480	22-482	22-552	22-556	22-558	22-560	
22-486 XL	TXL-222	40.63	22-484	22-486	22-488	22-500	22-554	22-658			
22-492 XL	22-492-XL	20.00	22-492	22-592							
22-835 #2	TXL-221	37.59	22-827	22-829	22-831	22-833	22-835	22-871	22-1307	22-1369	22-1391
			22-1393	22-1395	22-1397	22-1403	22-1405	22-1407	22-1415	22-1463	
22-937 XL	22-937-XL	19.67	22-937	22-1025	93-001						
43-1045 XL	43-1045-XL	20.91	43-1045								
43-1167 XL	43-1167-XL	22.01	43-1167								
43-1169 XL	43-1169-XL	37.50	43-1169	43-1659	43-1661	43-1663					
43-476 XL	43-476-XL	22.70	43-474	43-476	43-478	43-498					
43-526 XL	43-526-XL	23.86	43-526	43-630							
43-530 XL	43-530-XL	33.32	43-528	43-622	43-624	43-632	43-634				
43-770 XL	43-770-XL	18.80	43-766	43-768	43-770	43-772	43-774	43-776	43-778	43-800	43-802
			43-804	43-808	43-810	43-812	43-814	43-816	43-818	43-894	43-896
			55-1304	55-1306							
43-1971 XL	43-1971-XL	17.30	43-1977	43-1191	43-1995	43-1999					
43-1975 XL	43-1975-XL	17.30	43-1997								
46-1242 XL	TXL-464	25.50	46-1242	46-1244	46-1248	46-1416	46-1418	46-1454	46-1466	46-1468	46-1470
			46-1472								
46-1246 XL	TXL-466	37.30	46-1240	46-1246	46-1438	46-1444	46-1632				
46-1280 XL	TXL-462	32.99	46-120	46-122	46-220	46-1254	46-1256	46-1258	46-1260	46-1274	46-1276
			46-1278	46-1280	46-1282	46-1294	46-1330	46-1332			
46-1339 XL	TXL-461	20.31	46-1333	46-1335	46-1339	46-1367	Heavy Duty, For Standard duty Replaced with TXL-463				
46-1343 XL	TXL-467	17.40	34-1509	46-1343	Extra leaf includes double nib interlock						
46-1448 XL	TXL-468	34.40	46-1302	46-1304	46-1404	46-1422	46-1424	46-1426	46-1428	46-1430	46-1434
			46-1440	46-1446	46-1448	46-1490	46-1494	46-1496	46-1498	46-1614	46-1616
			46-1618	46-1710	46-1764	46-1766	46-1768	46-1938	46-1966		
46-1476 XL	TXL-4616	36.10	46-1476	46-1772	46-1774	46-1776	46-1778	Extra leaf with wrapper. Replaces original #2 leaf			
46-1794 XL	TXL-4618	35.70	46-1794	46-1800	46-1828	46-1878	46-1960				
55-120 XL	TXL-552	39.70	55-118	55-120	55-144	55-150	55-152	55-1176	55-1188	55-1190	55-1216
			55-1218	96-124	96-126	96-128	96-130	96-132	96-1366		
55-1238 XL	TXL-556	25.19	55-1238	55-1254							
55-1242 XL	TXL-558	32.80	55-1240	55-1242	55-1262	55-1290	55-1324	55-1326	59-462		
			Standard Duty. For Heavy Duty Replaced with TXL-5510								
55-1260 XL	TXL-5510	38.01	55-1256	55-1258	55-1260	Heavy Duty. For Standard Duty Replaced with TXL-558.					



Taper Extra Leaf Series



Universal Group	Dayton Parts	Weight	Springs								
55-902 XL	TXL-550	31.79	55-116	55-130	55-132	55-748	55-756	55-866	55-868	55-872	55-900
			55-902	55-910	55-912	55-914	55-924	55-930	55-938	55-958	55-962
			55-964	55-968	55-970	55-972	55-974	55-980	55-1192	55-1208	55-1212
			55-1220	55-1226	55-1266	55-1268	55-1270	55-1272	55-1274	55-1276	55-1278
			55-1280	55-1284	55-1300	55-1302	55-1322	59-460	86-200	86-222	
59-400 XL	TXL-592	42.90	59-400	59-400HD	59-406	59-428	59-482	59-490	59-496	59-500	94-1242
			94-1244	94-1262	94-1268	94-1286	94-1288	94-1290	94-1312	94-1316	94-1356
			94-1360								
59-440 XL	TXL-596	30.75	59-404	59-408	59-430	59-440	59-444	59-492			
59-446 XL	TXL-590	50.00	59-446	59-450	59-510						
62-830 XL	TXL-620	30.08	62-826	62-828	62-830	62-838	62-968	62-976	62-984	62-1032	62-1044
			62-1098								
62-832 XL	TXL-622	37.40	62-832	62-840							
62-1104 XL	TXL-628	38.60	62-1104	62-1108	62-1130	62-1132	96-1252	96-1326	96-1328	96-1330	96-1338
			96-1340	96-1348	96-1350	96-1352					
75-136 XL	TXL-750	30.47	75-136	75-160	75-196	75-212	75-218	75-220	75-226		
75-208 XL	TXL-752	51.22	75-208	75-210	75-214	75-224	75-232				