

SLG-Pro50/SLG-Pro60 Landing Gear

KEY FEATURES

✓ Versatile Mounting

The Pro50 and Pro60 use an 8-hole and 10-hole mounting flange, respectively.

✓ Light Weight

The AXN Pro Series is lean and mean. At under 187 lbs. for Pro50 and 206 lbs. for Pro60, form and function still goes hand in hand with quality.

✓ Low Maintenance

The AXN Pro Series gearbox comes standard with specially formulated grease and our grease containment system extends maintenance intervals.

✓ Robust Gusset and Housing

AXN brings you a unique and strong gusset in combination with a robust, formed axle tee housing. Support where you need it, when you need it!

✓ Super Heavy-Duty Sandshoes

Redefines "Solid Durability".

✓ High-Strength Gearing

Made of forged steel gearing, the Pro Series has a balanced combination of speed and power.

▶ **High Ratio:** 3.3 turns/inch of travel

▶ **Low Ratio:** 25.4 turns/inch of travel

✓ Capacities

▶ Lifting Capacity:

Pro50.....50,000 lbs.

Pro60.....60,000 lbs.

▶ Static Load Capacity:

Pro50.....160,000 lbs.

Pro60.....210,000 lbs.

✓ Premium Corrosion Protection*

The AXN Pro Series come standard with a superior E-coating for outstanding corrosion protection.

* Footware options are also separately available galvanized.

✓ Warranty

The SLG-Pro50 & SLG-Pro60 landing gear is backed by a competitive 5 year warranty.



Universal
Part Number
SLG-PRO50



Universal
Part Number
SLG-PRO60



Kits includes:

| | | | |
|-------------------------|---|---------------------|---|
| Support Leg (Gear Side) | 1 | Handle Clip | 1 |
| Support Leg | 1 | Connection Shaft | 1 |
| Crank Handle | 1 | Brace Lugs, W Style | 2 |

For more information visit www.theuniversalgroup.com or call 1.800.225.1845

Universal Group[®]

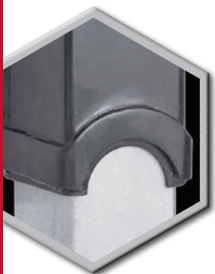


The Universal Group, LLC

1025 Thomas Busch Memorial Highway
Pennsauken, New Jersey 08110
1.800.225.1845
856.488.1800
Fax 1.800.360.9636

1120 Eden Road, Suite 100
Arlington, Texas 76001
1.800.637.4422

SLG-Pro50/SLG-Pro60 Landing Gear



| FEATURE | BENEFIT | THE AXN ADVANTAGE |
|--------------------------------|--|---|
| Weight | At 187 lbs for the Pro50, and 206 lbs for the Pro60, they are among the lightest products in the industry. | ▶ Allows you to haul more freight without sacrificing durability. |
| Coating | Premium E-Coating | ▶ Superior resistance to corrosion, especially in harsh environments where anti-icing chemicals are used on the roadway. |
| Lubrication and Sealing | Standard with grease tube and premium moly-based grease. Radial lip seals at all shaft locations. | ▶ Grease tube keeps grease where it needs to be, extending lube intervals. ▶ Premium moly-based grease maximizes efficiency for easier cranking and ensuring operation in extreme conditions. ▶ Seals provide superior sealing capability against road and spray contaminants that degrade performance and lead to repairs. |
| Gearing | Forged steel gearing | ▶ Strongest available – provides increased strength and unrivaled resistance to wear versus cast versions. Gear Ratios: LOW - 25.4 turns per inch HIGH - 3.3 turns per inch |
| Leg and Housing | Precision fit between leg and housing with reinforcing band | ▶ Increased strength and durability without a weight penalty. ▶ Higher resistance to side loading. |
| Durability | Meets or exceeds TTMA/AAR requirements | ▶ Certified performance for “peace-of-mind”. |
| Warranty | 5 years parts and labor | ▶ Competitive warranty backed by a responsive team. |

LIMITED WARRANTY

5 year P/L competitive warranty.*

* Applies to original owner based on adherence to recommended operation and maintenance procedures.

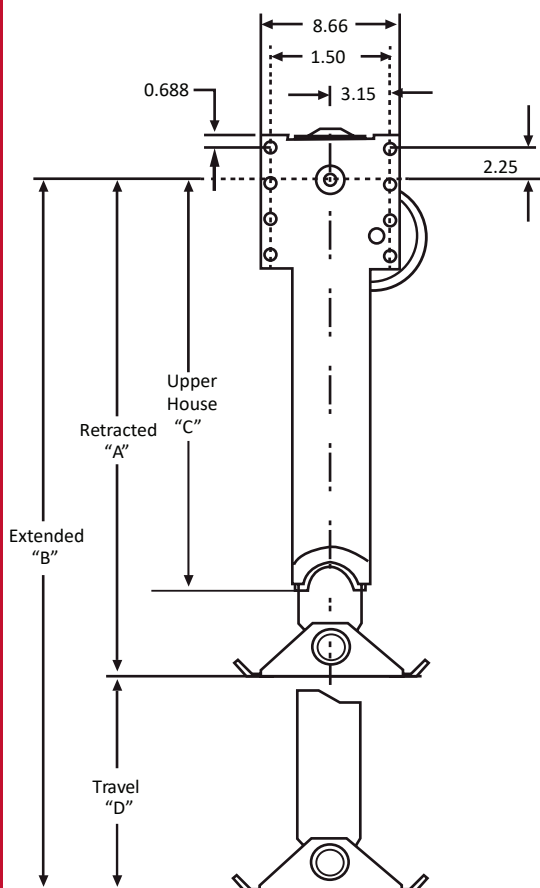
CERTIFICATION

All models meet or exceed AAR (M-931) TTMA RP-4 specifications.



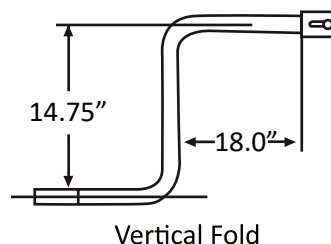
SLG-Pro50/SLG-Pro60 Landing Gear

General Dimension

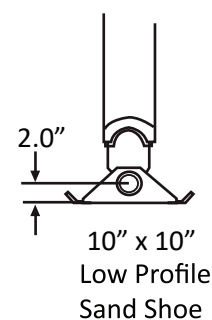


| | SLG-PR O50 | SLG-PR O60 |
|---------------------------------------|-------------------|-------------------|
| Lift Capacity: | 50,000 lbs. | 60,000 lbs. |
| Static Load Capacity: | 160,000 lbs. | 210,000 lbs. |
| Mounting Pattern: | 8-hole | 10-hole |
| Mount: | Inside or Outside | Inside or Outside |
| Retracted (A): | 27-5/8" | 28-13/16" |
| Extended (B): | 44-5/8" | 45-13/16" |
| Upper House (C): | 25-9/16" | 26-13/16" |
| Travel (D): | 17" | 17" |
| Connecting/Cross Shaft Length: | 77.5" | 77.5" |

Crank Type



Foot Type



SLG-Pro50/SLG-Pro60 Landing Gear

